

INSPIRING NATURE | INSPIRED TECHNO

BIOMIMICRY & TRANSPORT



Interactive and bilingual exhibition



130-200 m²



For all ages



Educational program

WHAT IF WE USED THE GENIUS OF NATURE?

Biomimicry helps us reconnect with our innate need to live in harmony with nature. The word comes from “bios” for life and “mimesis” for imitation. This methodology relies on the observation of shapes, processes and systems to imitate nature’s genius and offer innovative solutions.

When dreamers, creators and researchers observe nature and get inspired by it, promising concepts, fascinating ideas and inspiring projects come to life.



AN EFFECTIVE NATURE-TECHNO ALLIANCE!

A unique chance to discover up to thirty natural specimens and technological objects, all presented in a dynamic way through ten or so principles found in nature that were applied to transports.

WHETHER IT'S AT LARGE OR SMALL SCALE, NATURE IS AN ENDLESS SOURCE OF INSPIRATION FOR SCIENTISTS AND DESIGNERS.

An accessible and popularized content created thanks to the implication of over forty participants coming from five university laboratories, two museum institutions and eight technological enterprises that have actively collaborated with the design team.



GO ON AND MEET the living world and discover technological innovations and their source of inspiration from nature.

LET YOURSELF BE CARRIED by inspiring modes of travel.

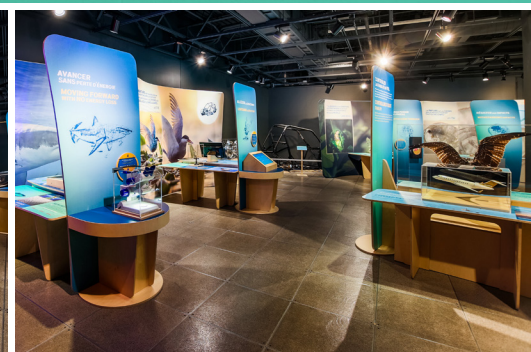
RECONNECT with our natural allies that have a lot to teach us.

BE IMPRESSED by innovative technologies inspired from performing principles developed by nature.

HAVE FUN experimenting solutions present in nature with interactive multimedia and mechanical games.

DISCOVER HOW INSPIRATION FROM birds' light bones lead to optimized vehicle structures, geckos inspire the development of adhesives optimized for vertical use, kingfishers' beak shape brings ways to considerably lower the noise made by a TGV.

INSPIRE YOURSELF from nature and create your own ingenious mode of travel.



CONCEPTION



COLLABORATION



CONTRIBUTION



INFORMATION

MANON LEBEAU | Développement Coordinator
 Sherbrooke Museum of Nature and Science
 225 Frontenac, Sherbrooke, QC J1H 1K1
 T. +1.819.564.3200 x 226 | S. F. +1.877.434.3200 x 226
 C. +1.819.347.7528 | F. 819.564.0287
 manon.lebeau@mns2.ca | www.mns2.ca